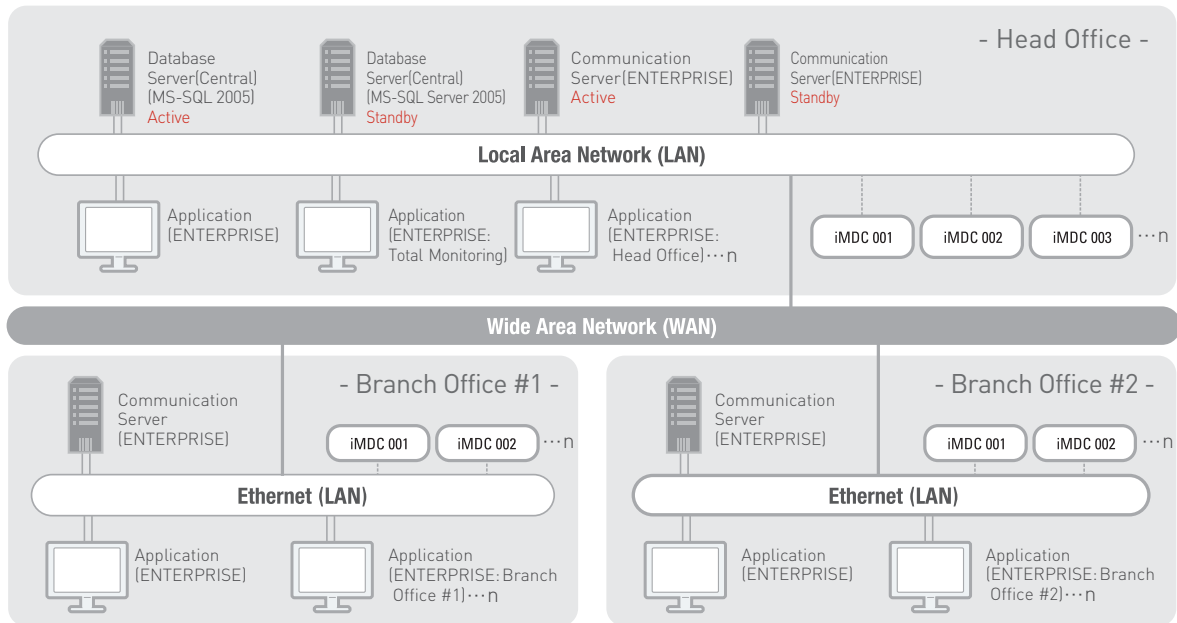


STARWATCH ENTERPRISE

STARWATCH ENTERPRISE is a professional access control management S/W suitable for sites and areas such as airports, intelligent buildings, laboratories and other special facilities, where high level of security and efficient management are required. The system offers multi-site management using the LAN/WAN communication and guarantees stable performance even during the emergency situation due to the dual system processing.



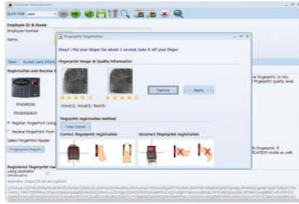
System Configuration



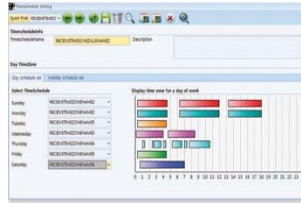
System Requirements

	Requirements	Etc.
Operating System	General Operating System Windows XP / Windows Vista / Windows 7 * 32 Bit Windows Server Operating System Windows 2003 Server *This system does not support Windows 95, 98, ME, 2000 (Professional and Server).	All the operating systems are suggested to install the latest service pack and security patch.
CPU	Pentium 4 Core 2 Duo or Higher	
RAM	2GB or Higher	
HDD	100GB or Higher	
VGA	1024 x 768 or Higher Resolution 65,536 Color (16 bit color) or Higher	
CD-ROM	8X or Higher	
Database	Microsoft SQL Server 2005/2008 Express Edition (Built-In) Microsoft SQL Server 2005/2008 (Sold Separately)	All the databases are suggested to install the latest service pack and security patch.
Compatible Controllers / Readers	Controllers : iMDC, iEDC Proximity Readers : RF Series, IP Series, SR Series Biometric Readers : LX006 Series, FINGER006 Series, FGR006 Series, MAC1000 Series, 2000 Series	

System Features



User Fingerprint Registration



Time-Schedule Setting



Device Setting Wizard



Integrated Monitoring

- + Fault Tolerant System Applied
 - Dual system processing of controller, communication server and database for active/standby system
 - In case of the system failure, the dual-system processing keeps the system running with the backup(Standby) system
 - * In case of dual system processing of database, Microsoft SQL Server function is used
- + Enhanced System Security Features
 - Comprehensive system log management to increase system security
 - Automatic system log-off function
 - Authorization setting per user account
 - System log-in via fingerprint recognition
 - Encrypted with 3DES for data transmission and fingerprint information protection
- + Multi-Site Management
- + Maximized System Performance with Distributed System Environment
 - ENTERPRISE Application, Communication Server and Database can be installed and operated in separate server
 - Maximized system scalability, stability and performance
- + Strengthened Access Control Features
 - Various Anti-Passback Mode (Local, Zone, Global, Timed, Soft Anti-Passback)
- + Effective Information Management Features
 - Supports setting information synchronization between the devices and software
 - Group management by department, company, region for managing large quantity of information
- + Convenient Management Features
 - Head count of the members in the room using the In Room Monitoring feature
 - Visitor access status monitoring using the visitor management feature
 - Guard Tour feature
 - Supports basic Time & Attendance function
 - Various report available for printing including the user defined reports
- + Integrated Monitoring Features
 - Intuitive monitoring using the graphic map (Using the icons on the map, control the doors and input devices)
- + Event Management Features
 - Event Priority Setting
 - Event notification via E-mail and SMS
 - Voice notification of event occurrence ("wav" file setting by event type)
- + Door Status Monitoring and Control
- + Multi-Language Support
 - Unicode based multi-language support allows easy language conversion